

Brix Foundation

Brix Workflow Manager

Best Engineering Practice

The key factor for successfully integrating people and systems is efficient monitoring and management of the process going on between them. Brix Workflow Manager enables companies to integrate standardised work processes into the production line and thereby effectively manage people, applications and information. The results are improved productivity, lower production costs and enhanced competitiveness.

Engineering consists of complex and interactive work processes involving multiple disciplines, applications and systems. To be successful there is a need for effectively managing people, applications and information and to be a learning organisation that is able to thrive on best practices.

Brix Workflow Manager is a workflow system developed by DNV Software to meet these challenges.

With forty years of experience, DNV Software has learned from the industry that the best way of sharing and leveraging Best Engineering Practice is to continuously improve standardised work processes throughout the organisation.

DNV Software has implemented the Workflow Manager into most of its own products. In this way, we aim to help existing and new customers find the right balance between emerging technologies and new ways of engineering.

Benefits

Quality: Improves the quality of work in a concurrent and multi-discipline environment. Coordinates activities, detects inconsistencies and avoids the use of outdated information.

Flexibility: Easily updated to meet new business requirements.

Productivity: Streamlines the flow of information, improves communication and enables efficient reuse of design information between disparate applications. Results in lower production costs and enhanced competitive power.

Integration: Integrates with any executable, COM-objects, .NET components, Web Services and documents like Microsoft Office Products.

Collaboration: Enhances collaboration across disciplines through multi-user environments.

Learning organisation: Increases awareness of the work processes that are currently most productive for your company. Facilitates capturing, sharing and improving knowledge across organisational borders.



Brix Workflow Manager

Brix Workflow Manager enables customised work-process templates to be defined, and work-process instances to be executed and managed. It is scalable from a simple process-centric application to a system of multiple applications supporting several business processes, multi-user environments and long-running transactions.

Brix Workflow Manager consists of three main features:

Process Editor

The editor is used to define work-process templates as a network of activities with their dependencies, conditions/rules, associated applications, associated roles, input/output information and customised behaviour.

Process Execution

The work process runs in an execution environment consisting of a workspace and a workflow engine as well as integration mechanisms for application integration:

Workspace lists all the activities within the process, enabling users with correct authorisation to run the activities and start up related applications.

Workflow engine verifies the transition state of each activity enforcing dependencies and evaluating conditions/rules.

Application integration Workflow Manager invokes any executable, COM-objects, .NET components, Web Services and documents like Microsoft Office Products.

Management tools

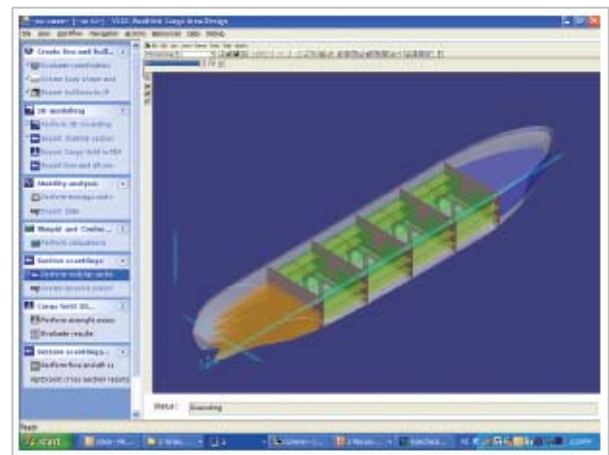
A set of tools for administrating templates, users, and running processes such as: Worklist displaying tasks that need attention, process status, history log and ad-hoc changes.

Technical platform

Workflow Manager is based on Microsoft .NET technology providing both Web and Windows user interfaces. The system supports SQL Server and Oracle database systems.

Workflow Manager is based on an open architecture allowing all workflow services to be reached by any third party solutions.

Mechanisms such as XML Web Services, BizTalk or queuing mechanisms (MSMQ) may be used to support interaction between collaborating organisations across company boundaries.



Brix Workflow managing an engineering work process.